

# Winchester

## OVERVIEW

Winchester is a beautiful, fairly wealthy town 8 miles North of Boston. It has a population of 22,677 in 6.3 miles. It borders Woburn, Stoneham, Medford, Arlington and Lexington. It has limited rental options compared to some of its neighbors and other suburbs of Boston. It is on the commuter rail to Boston and not far from a Medford T stop, has highly rated schools and has many amenities; so it can be a very attractive option if affordable rentals can be located.

## SCHOOLS

Ambrose Elementary School (Grades K – 5)  
Great Schools Rating: 8/10

Lincoln Elementary School (Grades K – 5)  
Great Schools Rating: 7/10

Lynch Elementary School (Grades PK – 5)  
Great Schools Rating: 7/10

Muraco Elementary School (Grades K – 5)  
Great Schools Rating: 8/10

Vinson-Owens Elementary School (Grades K – 5)  
Great Schools Rating: 9/10

McCall Middle School (Grades 6- 8)  
Great Schools Rating: 8/10

Winchester High School (Grades 9- 12)  
Great Schools Rating: 9/10

High School 4-Year Graduation Rate

|                        |       |
|------------------------|-------|
| Winchester High School | 97.7% |
| Massachusetts          | 88.0% |

Data Sources: GreatSchools.org; MA Dept. of Elementary & Secondary Education District Profiles

## COMMUNITY SAFETY

In 2016, Winchester’s violent crime rate was 96% lower than the national average and 95% lower than the Massachusetts average. The property crime rate was 70% lower than the national average and 53% lower than the Massachusetts average. (Data Source: www.cityrating.com/crime-statistics)



## TRANSPORTATION

Winchester has two stops of the Lowell Commuter rail line which goes to North Station. Commuters can also take a bus to the Orange Line in Medford. I93 is close to Winchester.

## DEMOGRAPHICS

Poverty Rate: **2.5%**

Percent of population that speaks a language other than English at home: **19.8%**

| Race                                       | %     |
|--|-------|
| White                                      | 83.2% |
| Asian                                      | 12.8% |
| Two or more races                          | 2.5%  |
| Black/African American                     | 0.3%  |
| Some other race                            | 1.2%  |
| Native Hawaiian and Other Pacific Islander | 0.0%  |
| American Indian and Alaska Native          | 0.0%  |
| Age Group                                  | %     |
| Under 5                                    | 6.7%  |
| Age 5-17                                   | 21.2% |
| Age 18-64                                  | 54.6% |
| Age 65 and older                           | 17.5% |

Data Source: U.S. Census Bureau

## LOCAL AMENITIES

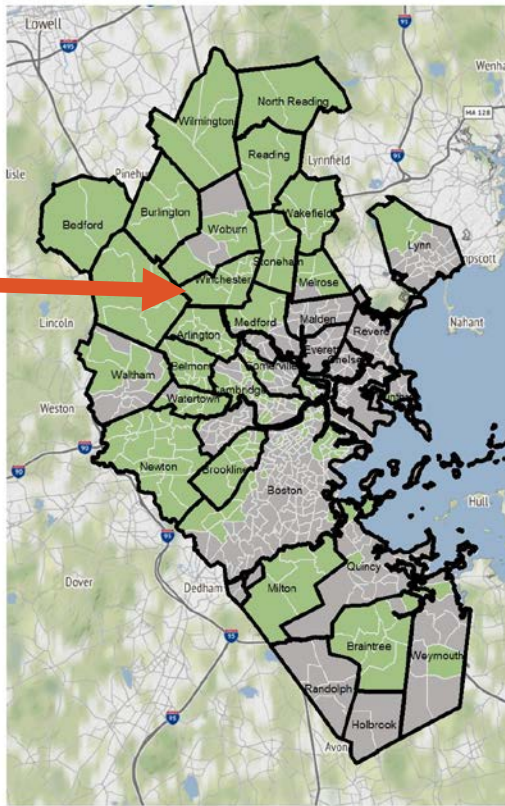
Winchester has a quaint small town center with bookstore, restaurants, shops. Stop and Shop in Winchester and a Market Basket not that far away in Burlington (but only by car) and an Aldis not far away in Medford. Winchester contains part of the Middlesex Fells Reservation and has several large bodies of water, including Mystic Lakes and Aberjona River. The Splash Park at Borggaard Beach offers kids the opportunity to play right on the edge of Wedge Pond. Wright Locke Farm offers berry picking, farm tours and youth education programs. The Recreation Department offers summer camps for kids and tennis for adults and kids, among other programs. The Winchester Youth Center offers activities for teens, including community service. There is a farmer's market every Saturday from June through October.



## MAP

### SNO Mass Opportunity Areas

Metro Housing Boston



 SNO Mass Opportunity Area  Not a SNO Mass Opportunity Area